

# IRELAND

EQUESTRIAN TOURS

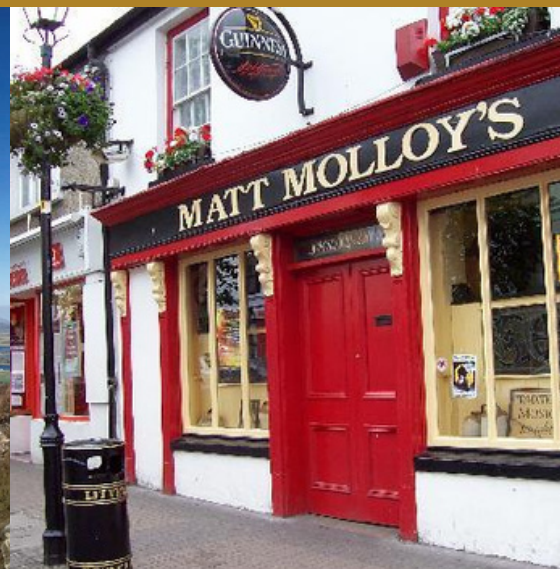


## IRELAND EQUESTRIAN TOURS

COUNTRY ESTATES & THE WILD ATLANTIC WAY  
- A 6 NIGHT RIDING HOLIDAY -

### *Westport & Castle Leslie Estate*

[WWW.IRELANDEQUESTRIANTOURS.COM](http://WWW.IRELANDEQUESTRIANTOURS.COM)



## - ABOUT THIS ITINERARY -

If you're looking for an itinerary that offers mountains views, miles of coast & beach, a charming town filled with award-winning restaurants and lively pubs with traditional Irish music . . . look no further!

Croagh Patrick, Ireland's holiest mountain, serves as the backdrop to this picturesque riding adventure on the Wild Atlantic Way. Fabulous Cuisine, Traditional Pubs and Amazing Guides & Horses – it's all here. This west coast itinerary ends in County Monaghan with a 2 night stay at Castle Leslie Estate, one of Europe's premier equestrian estates!

Interested in sharpening your jumping skills? This itinerary includes an option of cross country jumping at Castle Leslie Estate.

**- This itinerary can begin on any day and is available year round -**

## - WESTPORT, COUNTY MAYO -

The charming town of Westport is situated on the shores of Clew Bay, an inlet of the Atlantic Ocean. One of the most spectacular bay's in Ireland, it is said that Clew Bay contains an island for every day of the year. Westport's most picturesque feature is the tree-lined and flower-filled promenade featuring stone bridges that cross the river Carrow Beg.

## - CASTLE LESLIE ESTATE, COUNTY MONAGHAN -

Nestled on 1,000 acres of undulating Irish countryside, dotted with ancient woodland and glittering lakes, Castle Leslie is one of the last great Irish castles estates still in the hands of its founding family. The estate offers an idyllic setting for outdoor adventure and is the perfect place to discover the thrill of exploring the countryside on horseback. From gentle estate hacks to exhilarating cross country rides, the estate is an equestrian's dream!

Located just 1.5 hours from the Dublin Airport, Castle Leslie is the perfect end your Ireland riding adventure!



# Where You'll Be!

*Westport, County Mayo*

*Castle Leslie Estate*

*Dublin Airport*



## - ACCOMMODATIONS -

Accommodations have been carefully selected, providing guests with personal service, comfortable en-suite bedrooms, and daily full Irish breakfast.

Ideally located in Westport, County Mayo, this 4-star, family-owned hotel offers spacious rooms with comfy beds, crisp linens, and cozy duvets. Enjoy free Wi-Fi and a fitness center with pool and sauna - The perfect end to a days riding!

Accommodations at Castle Leslie are spacious en-suite rooms located in the Lodge, a stone-cut stable courtyard, lovingly restored and imaginatively decorated retaining it's period features and original character. All guest rooms have spacious bathrooms that include clawfoot bath tubs, separate power showers, and luxurious beds guaranteed to induce a wonderful night's sleep!

## - HOW TO GET HERE -

We can arrange private transport from Dublin Airport/Dublin City to Westport. Alternatively, guests can take a train from Dublin City directly to Westport town.

Private transport is available from Westport to Castle Leslie Estate and to Dublin Airport/Dublin City.

(Private transport not included in itinerary pricing)

For those who wish to self drive, car rentals are available at the Dublin Airport.

## - THE HORSES -

Ireland is world renowned with its affinity for the horse. Irish horses are famous for their amazing jumping ability, gentleness, intelligence and stamina.

The equine teams at Westport and Castle Leslie consist of Irish Sport Horses, Connemara Ponies, Irish Cobs, Irish Thoroughbreds, and Irish Draughts. Chosen for their stamina, experience, and temperament - they're the perfect partners for your Ireland riding vacation!





## DAY ONE WESTPORT

Today head to Ireland's rugged west coast to Westport, County Mayo!

The day is yours to spend as you wish -- relax at the hotel or head out and explore the charming town of Westport.

The Westport restaurant & pub scene is second to none and is fast becoming a food lover's destination. The streets are filled with colorful shopfronts where you'll find local shopkeepers, bakers, artists, and craftspeople offering everything from stylish clothes and beautiful jewelry to traditional crafts and contemporary art.

Overnight: Westport

## DAY TWO SKELP, PROSPECT, BRACKLOON

Today's ride begins at "The Skelp", an off road path around the base of Croagh Patrick, Ireland's Holiest Mountain. Enjoy panoramic views across Clew Bay, one of the most magnificent bays in Ireland. With 365 islands, it is said that Clew Bay has an island for every year!

This trek allows you to get familiar with your horse. There will be plenty of opportunities to trot and canter as the horses enjoy stretching their legs on the hillside paths.

Overnight: Westport

## DAY THREE BERTA & MURRISK BEACH TREK

After breakfast, meet up with your guides and horses at the ruins of Murrisk Abbey, a 1456 abbey founded by the Augustinian Friars. Mount up and head down to Murrisk Beach to start of the day's ride.

There will be plenty of walking, trotting, and splashing as the tide goes out. Enjoy some canters before crossing the estuary towards Berta Beach. This long beach is protected with a bay on one side and the open ocean on the other! You'll ride past Dorninish Island, also known as 'Beetle Island' or 'Hippie Island' as it was once owned by John Lennon.



Finish back on Murrisk Beach galloping between high tide markers which guide the boats away from the oyster beds that lay on this flat, quiet beach.

End the day with a cold pint at Campbells Pub, a local's favorite at the foot of Croagh Patrick.

Overnight: Westport

## DAY FOUR

### WHITE STRAND TO SILVER STRAND BEACH

Today's ride is on the two best beaches in the West of Ireland and the Wild Atlantic Way. Pristine sands and secluded from the public --they are perfect for big gallops.

Silver Strand is arguably one of the best beaches in Ireland -- with views of Inishturk Island, Inisbofin, the Caher Islands, and Clare Island. There are many heritage and cultural sites on today's trek; from Spanish Armada Sea Wrecks to famine graves.

Enjoy big gallops and big views on your last day in County Mayo!

Overnight: Westport

## DAY FIVE

### CASTLE LESLIE ESTATE

Welcome to Castle Leslie!

The Leslie family motto "grip fast" originates from a famous horse journey by Bartholomew Leslie in the 11th century. His passion for horses was passed down through the ages.

Today enjoy a picturesque (and exhilarating) afternoon ride on some of the 21 miles of bridleways on the gorgeous estate.

The evening is open to do as you wish -- enjoy a pint in Lodge bar or explore the grounds on foot. Be sure to pay a visit St. Salvator's Church, you'll be surprised which famous couple exchanged vows at St. Salvators!

Overnight: Castle Leslie Estate







## DAY SIX

### CASTLE LESLIE ESTATE

Breakfast at Castle Leslie plays a big part of the dining experience! Choose from an array of delectable breakfast dishes created from locally sourced ingredients. From the traditional Full Irish Breakfast to Eggs Benedict, you'll love the breakfast affair at Castle Leslie!

Today you'll have the option of exploring another part of the estate on horseback or head out to the XCountry course for a morning of cross country jumping! The estate offers 300 cross-country jumps including natural obstacles such as rivers, ditches, fallen tree trunks, hedges, stone walls, drops and banks in many shapes and sizes.

Don't forget to have your picture taken in the famous lake in front of the castle - it is the perfect keepsake of your castle stay and riding holiday!

The afternoon is on your own - relax with a spa service in the Victorian Treatment rooms, indulge in Afternoon Tea in the Castle's Blue Room with stunning views of the gardens and panoramic views of Glaslough Lake, or enjoy a book in front of a crackling fire.

This evening enjoy Irish country cooking in Conor's Bar or gourmet dining in the 2AA Rosette award-winning Snaffles Restaurant.

Overnight: Castle Leslie Estate

## DAY SEVEN

### CASTLE LESLIE ESTATE

After breakfast, depart Castle Leslie.



# - 2023 RATES -

HIGH SEASON

**\$2,195 PER PERSON**

(July & August)



MID SEASON

**\$2,100 PER PERSON**

(May, June, September)



LOW SEASON

**\$1,990 PER PERSON**

(January, February, March, April, October, November, December)

## **The above rate includes:**

6-Nights Accommodation (sharing) + Daily Full Irish Breakfast + 3 Days Riding Westport + Westport Lunch x 1 + Horse, Tack, and Experienced Guides + Westport Ride Transfers + Use of Westport Hotel Leisure Centre/Pool + Westport Train Station Pick Up & Drop Off + 2 Days Riding Castle Leslie (2 Estate Treks or 1 Estate Trek/1 Cross Country Jumping)

**SINGLE SUPPLEMENT: \$465**

**DEPOSIT: \$750 PER PERSON**

**SINGLE RIDER SUPPLEMENT: \$125**



## **SUPPLEMENTS & ADD ONS**

### **NON RIDER RATES**

HIGH SEASON: \$1,140

MID SEASON: \$1,040

LOW SEASON: \$930

(Single Supplement: \$465)

### **DEPOSIT: \$400 PER PERSON**

(Includes: 6 Nights Accommodation + Daily Full Irish Breakfast + Use of Westport Hotel Leisure Centre/Pool  
+ Westport Train Station Pickup)

**EXTRA NIGHT DUBLIN CITY HOTEL *or* DUBLIN AIRPORT HOTEL:  
PRICED ON REQUEST**

### **GROUND TRANSPORTATION**

We do not include ground transportation on our itineraries, as some of our guests prefer to rent a car, use public transportation, or hire private transport.

We can arrange private airport transfers and transport to Castle Leslie

Whatever your preferred mode of transportation, we will manage all the logistics so your riding vacation is completely seamless.

### **RATES DO NOT INCLUDE:**

Ground Transport (Airport Transfers, Transfers to Castle Leslie)

Lunches not Indicated

Evening Meals

Travel Insurance

Activities Not Listed on Itinerary

Domestic or International Airfare

Discretionary Tips