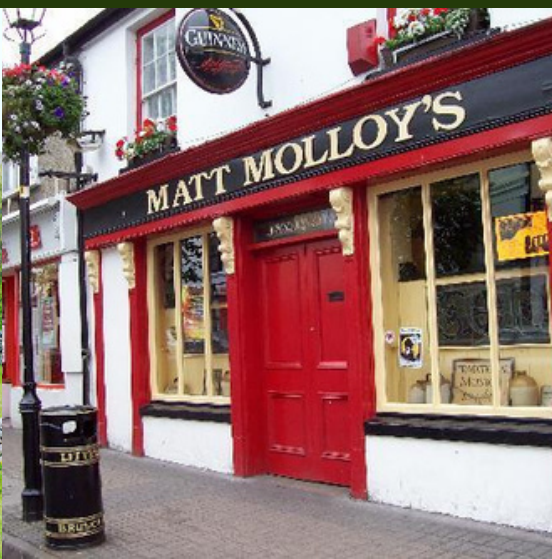


IRELAND EQUESTRIAN TOURS



WEST COAST & THE WILD ATLANTIC WAY - A 4 NIGHT WESTPORT RIDING HOLIDAY - *County Mayo*

WWW.IRELANDEQUESTRIANTOURS.COM



Where You Will Be!



★ MAYO
Westport

★ DUBLIN
DUBLIN AIRPORT

★ SHANNON AIRPORT
LIMERICK

KERRY

CORK

DONEGAL

LONDONDERRY

ANTRIM

NORTHERN IRELAND

TYRONE

FERMANAGH

ARMAGH

DOWN

SLIGO

LEITRIM

CAVAN

MONAGHAN

LOUTH

ROSCOMMON

LONGFORD

MEATH

WESTMEATH

GALWAY

OFFALY

KILDARE

REPUBLIC OF IRELAND

LAOIS

WICKLOW

CLARE

CARLOW

SHANNON AIRPORT

TIPPERARY

KILKENNY

WEXFORD

WATERFORD

ABOUT THIS ITINERARY

If you are looking for an itinerary that offers mountain views, miles of coast & beach in a town filled with award-winning restaurants and lively pubs with traditional Irish music . . . look no further!

Ireland's holiest mountain, Croagh Patrick, serves as the backdrop to this picturesque riding adventure on the Wild Atlantic Way. Fabulous cuisine, amazing guides, wonderful horses -- its all here!



ACCOMMODATIONS & MEALS

Ideally located in Westport, County Mayo, this cozy 4-star, family-owned hotel offers spacious rooms with comfy beds, crisp linens and comfy duvets. Enjoy free Wi-Fi and a fitness center with pool and sauna - The perfect end to a days riding!

This hotel is walkable to Westport Harbour, Westport House, or Westport Town.

Daily full Irish breakfast is included.

Vegetarian and Gluten Free Options Available

Non-Riders Welcome!

(Non Rider Rate Available)

HOW TO GET HERE

This itinerary is perfect for those who don't want to hassle with driving in Ireland.

Westport is a non-stop train ride from Dublin City! We will arrange train station pickup and transport to accommodations.

Alternatively, guests can fly into Shannon Airport. We can arrange a driver* to collect you at the Shannon airport and transport you to Westport.

(Bonus: Stop at the Cliffs of Moher on way!)

*Not included in pricing



HORSES + RIDING ABILITY + TACK

The equine team at Westport consist of Irish Sport Horses, Irish Draughts, Irish Thoroughbreds, and Irish Cobs. Chosen for their stamina, experience, and temperament - they are the perfect partners for your west coast riding holiday!

Riding Ability

Intermediate to Advanced: Riders should be comfortable at the walk, trot (with posting), and cantering for short periods.



- DAY ONE - WESTPORT

Welcome to Ireland's rugged west coast: Westport, County Mayo!

The day is yours to spend as you wish -- relax at the hotel or head out and explore the charming town of Westport.

The Westport restaurant & pub scene is second to none and is fast becoming a food lover's destination. The streets are filled with colorful shopfronts where you'll find local shopkeepers, bakers, artists, and craftspeople offering everything from stylish clothes and beautiful jewelry to traditional crafts and contemporary art.

Overnight: Westport

- DAY TWO - SKELP, PROSPECT, BRACKLOON

Today's ride begins at "The Skelp", an off road path around the base of Croagh Patrick, Ireland's Holiest Mountain. Enjoy panoramic views across Clew Bay, one of the most magnificent bays in Ireland. With 365 islands, it is said that Clew Bay has an island for every year!

This trek allows you to get familiar with your horse. There will be plenty of opportunities to trot and canter as the horses enjoy stretching their legs on the hillside paths.

Overnight: Westport

- DAY THREE - BERTA & MURRISK + BEACH TREK

After breakfast, meet up with your guides and horses at the ruins of Murrisk Abbey, a 1456 abbey founded by the Augustinian Friars. Mount up and head down to Murrisk Beach to start of the days ride.

There will be plenty of walking, trotting, and splashing as the tide goes out. Enjoy some canters before crossing the estuary towards Berta Beach. This long beach is protected with a bay on one side and the open ocean on the other! You'll ride past Dorninish Island, also known as 'Beetle Island' or 'Hippie Island' as it was once owned by John Lennon.

Finish back on Murrisk Beach with a few nice gallops between high tide markers which guide the boats away from the oyster beds that lay on this flat, quiet beach.

End the day with a cold pint at Campbells Pub, a local's favorite at the foot of Croagh Patrick.

Overnight: Westport

- DAY FOUR - WHITE STRAND + SILVER STRAND BEACH

Today's ride is on the two best beaches in the West of Ireland and the Wild Atlantic Way. Pristine sands and secluded from the public --they are perfect for big gallops.

Silver Strand is arguably one of the best beaches in Ireland -- with views of Inishturk Island, Inisbofin, the Caher Islands, and Clare Island. There are many heritage and cultural sites on today's trek; from Spanish Armada Sea Wrecks to famine graves.

Enjoy big gallops and big views on your last day in County Mayo!

Overnight: Westport

- DAY FIVE -

Depart Westport

(Guests may add extra nights in Westport, Shannon, Galway, or Dublin)

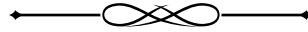


- 2024 RATES -

HIGH SEASON

\$1,590 PER PERSON

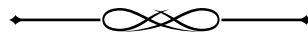
(July & August)



MID SEASON

\$1,500 PER PERSON

(May, June, September)



LOW SEASON

\$1,395 PER PERSON

(January, February, March, April, October, November, December)

The above rates include:

4-Nights Hotel Accommodation (sharing) + Daily Full Irish Breakfast + 1 Lunch
+ 3 Days Riding + Horse, Tack, and Guide + Trail Ride Transfers + Use of
Westport Woods Leisure Centre + Westport Train Station: Pick up & Return

DEPOSIT:

\$500 PER RIDER

(SINGLE SUPPLEMENT: \$180)

SINGLE RIDER SUPPLEMENT: \$125



SUPPLEMENTS & ADD ONS

NON RIDER RATES

HIGH SEASON: \$800

MID SEASON: \$690

LOW SEASON: \$585

(Single Supplement: \$180)

DEPOSIT: \$250 PER PERSON

(Includes: 4 Nights Accommodation (sharing) + Daily Full Irish Breakfast + Use of Hotel Leisure Centre/Pool + Train Station Pickup)

EXTRA NIGHT DUBLIN CITY HOTEL *or* DUBLIN AIRPORT HOTEL:

PRICED ON REQUEST

GROUND TRANSPORTATION

We do not include ground transportation in our itineraries as some of our guests prefer to rent a car, use public transportation, or hire private transport.

We are partnered with private drivers and will provide transportation quotes for roundtrip (or one-way) transfers.

Whatever the preferred mode of transportation, we manage the logistics so your riding vacation is completely seamless.

RATES DO NOT INCLUDE:

Airport Transfers

Evening Meals

Travel Insurance

Activities Not Listed on Itinerary

Domestic or International Airfare

Discretionary Tips